

IMA Labeling

SpeedMate Pro Label Applicator



high-speed - accurate - reliable

SpeedMate Pro is a high-performance wipe-on label applicator series designed to reliably and accurately apply labels at speeds up to 100m/min.

Independently powered label unwinder and backing paper revider increase precision at high speed by ensuring the label web is automatically unwound reducing loading at the beak.

As standard all SpeedMate Pro systems include low-label sensor, backing paper roll level sensor, status beacon and 350mm label roll capacity (400mm optional).

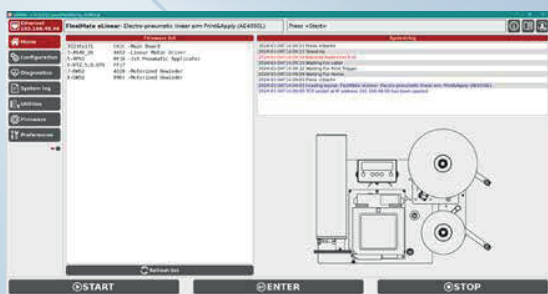
The 7" touchscreen HMI provides an intuitive interface for operators to easily set up and monitor the system.

1.



Features

- High-speed wipe-on applicator - up to 100m/min
- 2", 4", 6" and 10" wide models
- 350mm label roll as standard, 400mm optional
- Independently powered label unwinder and backing paper rewriter for maximum accuracy at high speed and low maintenance
- Label low sensor as included standard
- Status beacon included as standard
- Backing paper reel level sensor included as standard
- Designed for integration with thermal transfer coders and laser markers for label overprinting
- 7" touchscreen HMI controller
- Non-stop, tandem mode function as standard



LinkMate

All IMA Labeling systems can be managed and monitored using LinkMate PC-based software via Ethernet or USB allowing central control and management of your labelling systems.

System performance can be monitored and data shared with support teams for maximum efficiency.

User level is managed by 3 levels of security User, Supervisor and Service.